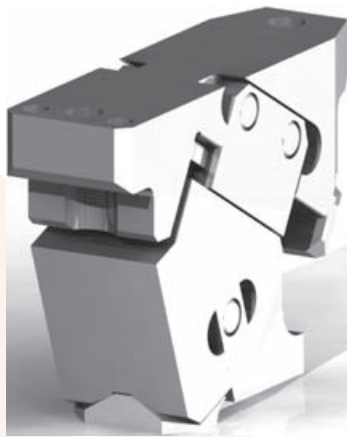


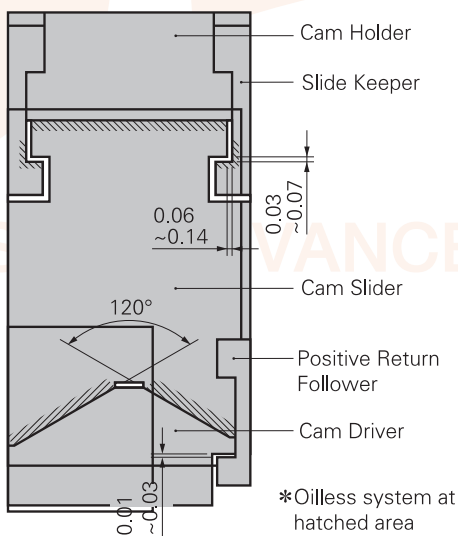
Aerial Cam Unit

- B-SUCD -



- Compact design with mounting width 52 mm and shut height 125 mm.(but 150mm for 75/80° angle)
- Automatic alignment mechanism of the V-shaped guide.
- Standard working force (one million strokes): 14.7 kN, Allowable working force (300,000 strokes): 29.4 kN.
- Available angle is 0° to 80° at increments of 5°.

Slide Structure and Positive Return Structure

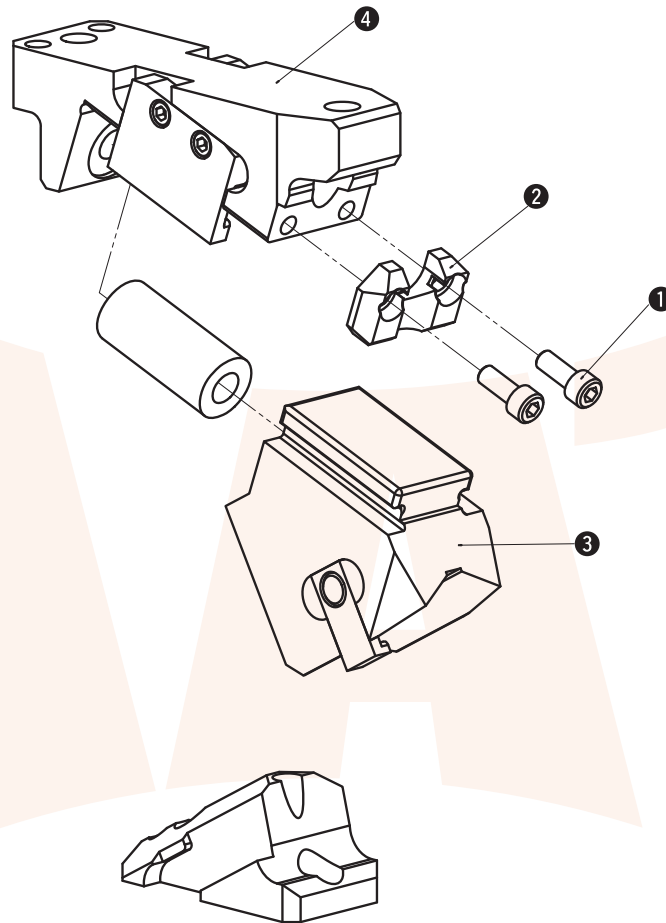


- Since the clearance between the cam holder (slide keeper) and the cam slider is 0.06 to 0.14 at one side, it is easy to assemble the unit and make adjustments. The cam slider makes alignment with the V groove guide.
- The clearance between the cam slider (positive return follower) and the cam driver is 0.01 to 0.03.
- Reduced number of components and simple structure achieved a compact and low cost product.

Aerial Cam Unit

- B-SUCD -

■ B-SUCD Structure and Assembly / Disassembly



- Disassembly method of B-SUCD52

- 1) Loosen hexagon socket head bolt (①) and remove stopper plate (②)
- 2) Pull and remove cam slider (③) from cam holder (④) to the rear.

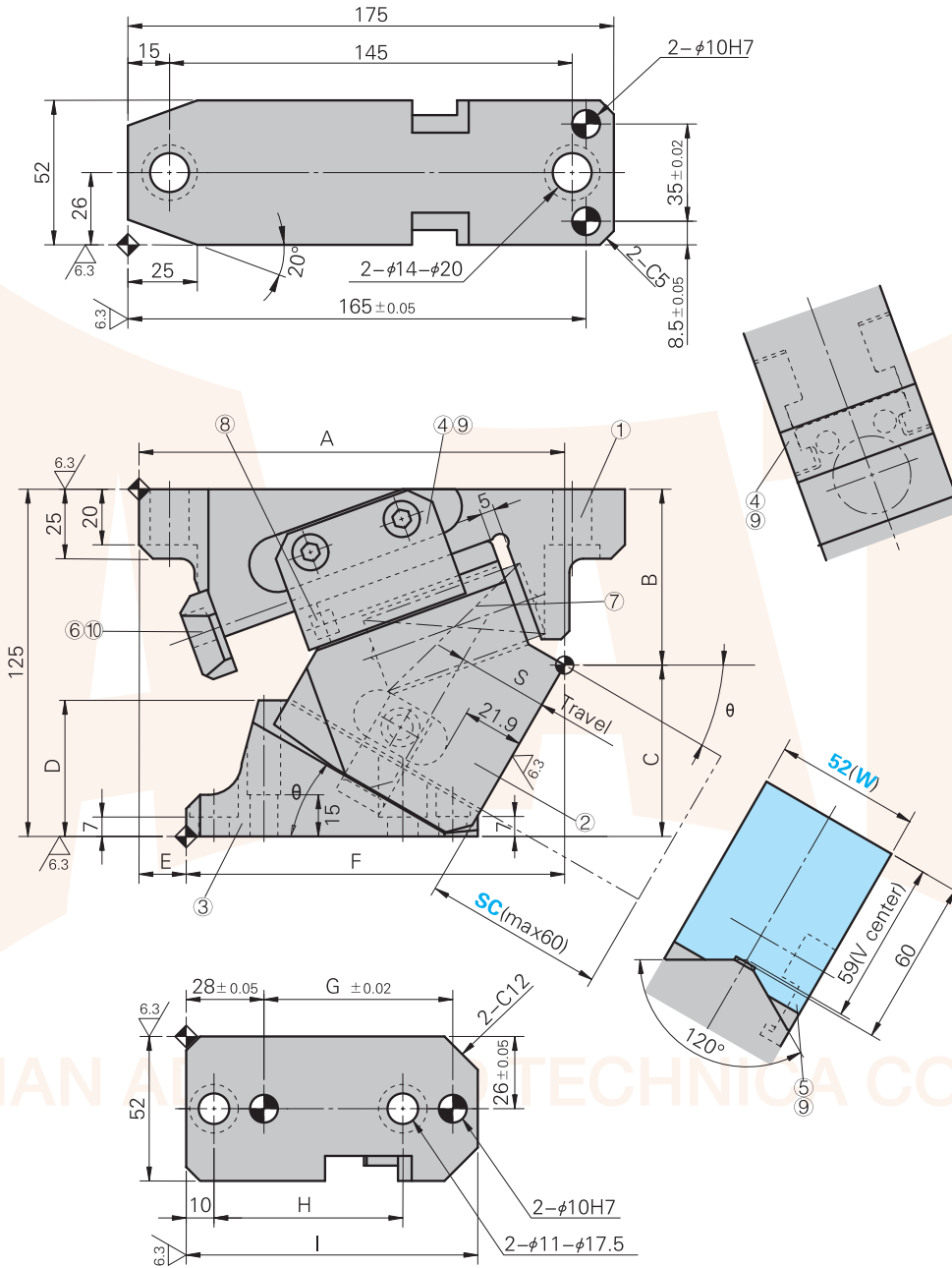
- Assembly method of B-SUCD52

- 1) Assemble components in the reverse order of disassembly.
 - Make sure that there is no foreign matter on the sliding area and assemble components.
 - The clearance between the cam slider and the cam holder is controlled. Match the stamped serial number on the holder and slider before assembly.
 - When cam is disassembled and then reassembled, please do not forget to assemble all bolts provided.

Aerial Cam Unit

- B-SUCD -

B - SUCD52(00° ~80°)



Aerial Cam Unit

Aerial Cam Unit

- B-SUCD -

W	θ	S	A	B	C	D	E	F	G	H	I
B-SUCD52	0	19.30	150.00	43.00	82.00	21	-45	105.00	68	68	105
	5	21.30	153.10	45.21	79.79	26	-42	111.10			
	10	23.30	153.55	47.83	77.17	31	-37	116.55			
	15	25.40	153.32	50.82	74.18	36	-32	121.32			
	20	27.60	153.38	55.10	69.90	40	-27	126.38			
	25	30.00	154.71	58.62	66.38	45	-20	134.71			
	30	32.60	153.28	63.31	61.69	49	-17	136.28			
	35	35.40	152.09	67.10	57.90	54	-10	142.09			
	40	38.60	149.14	71.93	53.07	58	-4	145.14			
	45	42.30	145.41	75.73	49.27	63	4	149.41			
	50	46.70	143.92	79.43	45.57	67	9	152.92			
	55	52.30	144.67	82.97	42.03	73	10	154.67			
	60	60.00	150.69	90.28	34.72	74	9	159.69			
	65	47.30	130.16	99.54	25.46	73	45	175.16			
	70	58.50	133.62	106.97	18.03	72.5	40	173.62			
	75	46.30	148.74	124.59	25.41	83	30	178.74			
80	57.50	110									

Table of Components

No.	Description	Qty	Material and Remark
①	Cam Holder	1	QT500
②	Cam Slider	1	QT500
③	Cam Driver	1	QT500
④	Slide Keeper	2	45
⑤	Positive Return Follower	1	45
⑥	Hexagon Socket Head Bolt	2	M8 x 20
⑦	Coil Spring	1	
⑧	Stopper	2	\varnothing 10 x 8
⑨	Hexagon Socket Head Bolt	5	M8 x 15
⑩	Stopper Plate	1	Q235

Option Code	Specification
SC	The mount surface is extended forward in the range of 10 to 60 mm (at increments of 10 mm).

Order No :

Catalog No.	(W)	-	(θ)
-------------	-----	---	--------------

B - SUCD

52

60

B - SUCD

52

60

SC30

Aerial Cam Unit

- B-SUCD -

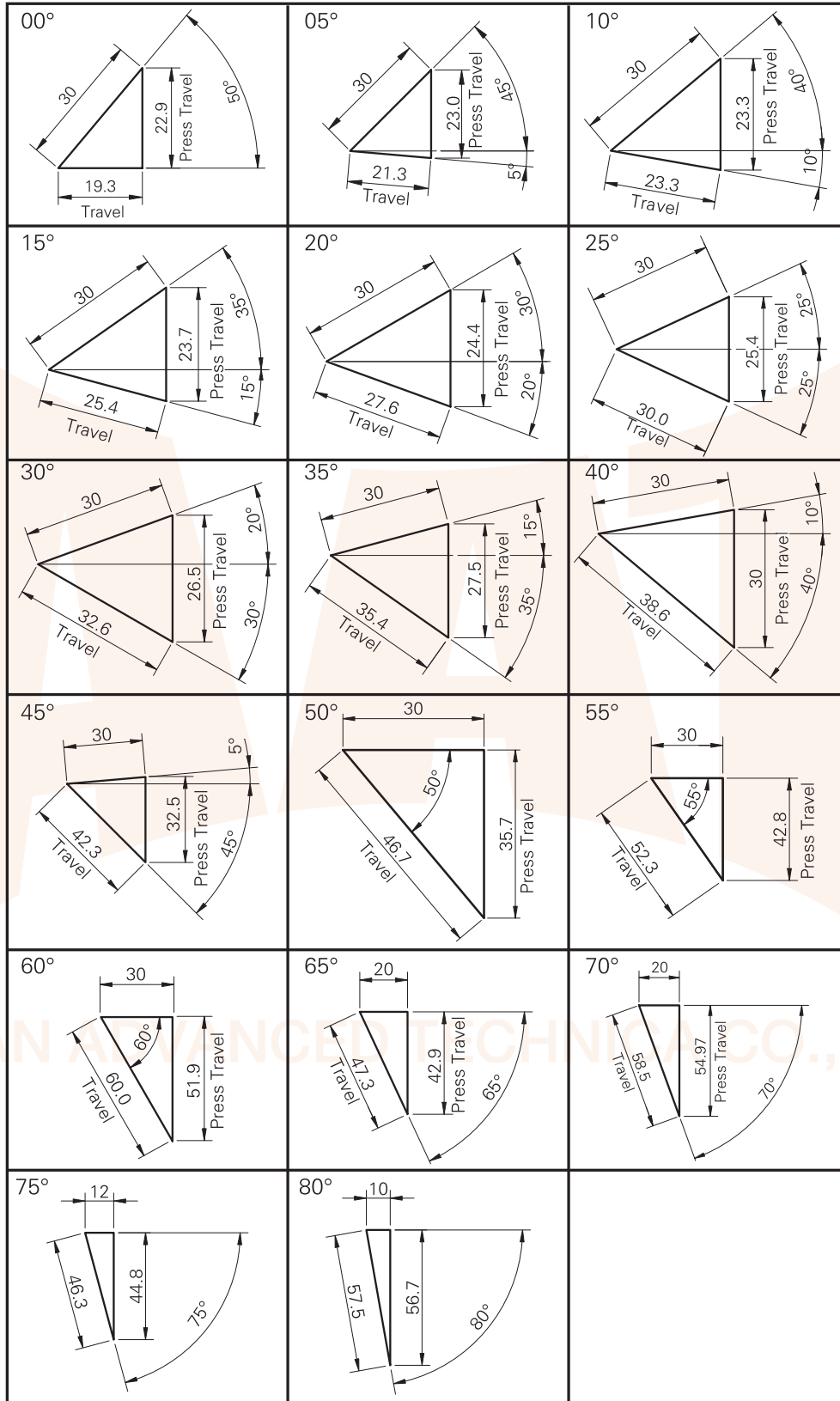
Catalog No.	(W)	(θ)	Travel S	Working Force kN(tonf)		Spring Force N (kgf)		Total Weight kg		
				Standard Working Force (one million strokes)	Allowable Working Force (300,000 strokes)	Initial Load	Final Load			
B-SUCD	52	00	19.3	14.7 (1.5)	29.4 (3.0)	245.0 (25.0)	980.0 (100.0)	5.3		
		05	21.3					5.2		
		10	23.3					5.1		
		15	25.4					5.0		
		20	27.6							
		25	30.0							
		30	32.6					4.9		
		35	35.4							
		40	38.6					5.0		
		45	42.3							
		50	46.7							
		55	52.3					5.2		
		60	60.0							
		65	47.3					327.0 (33.3)	981.0 (99.9)	5.9
		70	58.5					327.1 (33.4)	981.2 (100.1)	7.8
75	46.3	7.7								
80	57.5	436.1 (44.5)								

Aerial Cam Unit

Aerial Cam Unit

- B-SUCD -

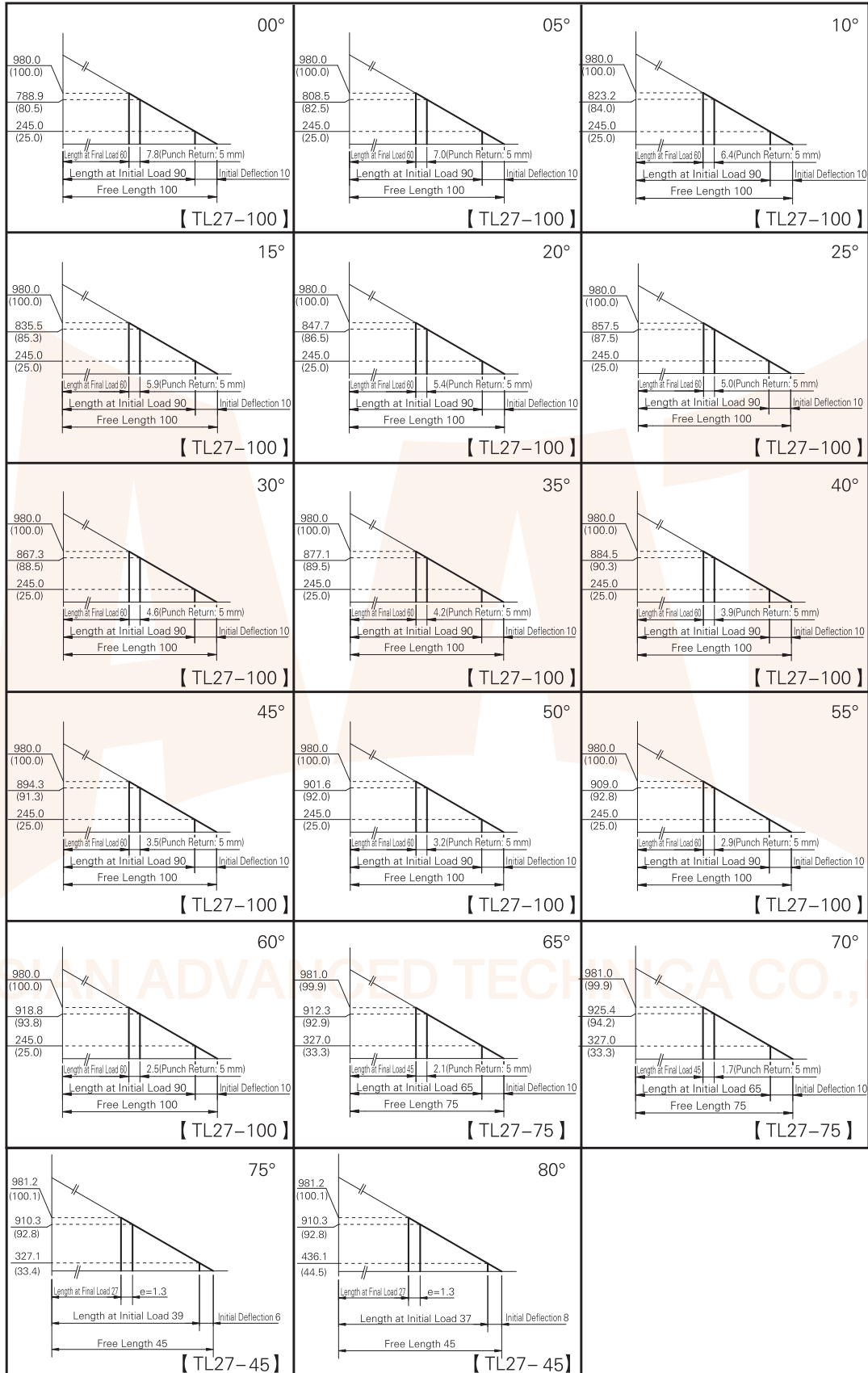
Cam Diagram



Aerial Cam Unit

- B-SUCD -

Spring Diagram



Aerial Cam Unit