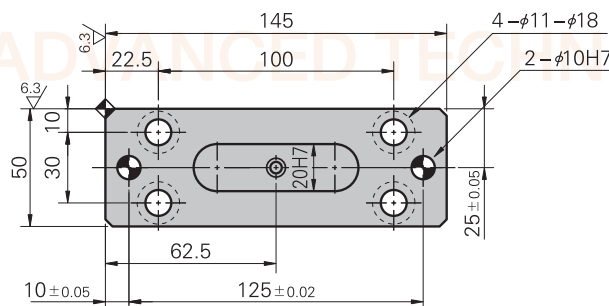
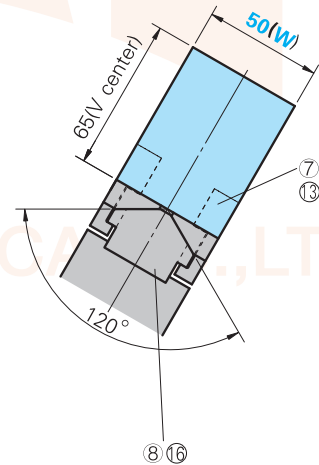
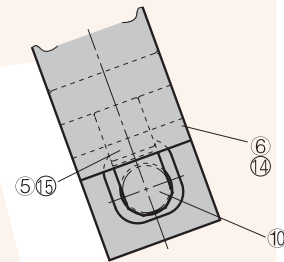
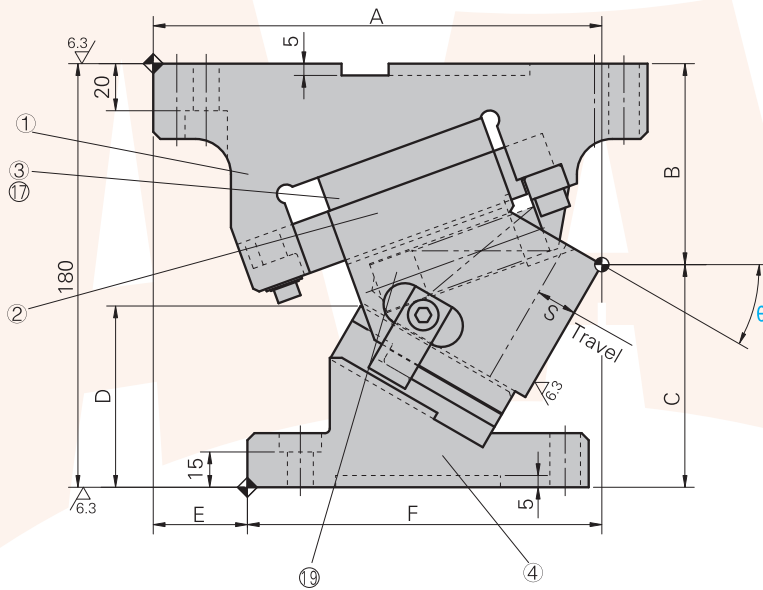
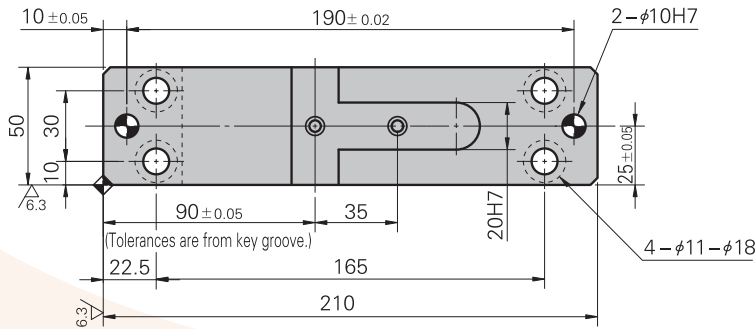


Aerial Cam Unit

- UCMSG -

B - UCMSG50 (00° ~ 75°)



Aerial Cam Unit

- UCMSG -

W	θ	S	A	B	C	D	E	F
B-UCMSG50	0	15.00	195.00	67.50	112.50	46.00	-80	115.00
	5	15.60	198.04	68.29	111.71	52.40	-75	123.04
	10	15.60	195.99	69.77	110.23	58.60	-65	130.99
	15	17.00	198.77	71.95	108.05	64.50		133.77
	20	18.40	196.34	74.79	105.21	70.10	-55	141.34
	25	18.00	191.62	80.28	99.72	73.30	-41	150.62
	30	17.40	190.58	85.39	94.61	77.00	-40	150.58
	35	18.90	187.15	90.10	89.90	81.30	-25	162.15
	40	20.60	183.29	95.35	84.65	85.10	-22.5	160.79
	45	22.50	179.94	98.13	81.87	91.40	-10	169.94
	50	23.30	174.07	99.37	80.63	99.20	-5	169.07
	55	26.10	168.64	111.04	68.96	96.40	15	183.64
	60	31.50	162.61	118.08	61.92	98.00	25	187.61
	65	36.60	155.95	125.44	54.56	99.00	35	190.95
	70	39.50	153.63	133.06	46.94	99.40	40	193.63
75	52.20	150.64	140.89	39.11	113.70	50	200.06	

Table of Components

No.	Description	Qty	Material and Remark
①	Cam Holder	1	QT500
②	Cam Slider	1	QT500
③	Wear Plate	1	Bronze
④	Cam Dirver	1	QT500
⑤	Guide Bar	1	Bronze
⑥	Spring Block	1	Q235
⑦	Positive Return Follower	2	45
⑧	Cam Slide Guide	1	Bronze
⑨	Coil Spring	1	
⑩	Hexagon Socket Head Bolt	2	M 8 x 15
⑪	Hexagon Socket Head Bolt	2	M 8 x 25
⑫	Hexagon Socket Head Bolt	1	M 10 x 30
⑬	Hexagon Socket Head Bolt	2	M 10 x 25
⑭	Hexagon Socket Head Bolt	4	M 8 x 20

Option Code	Specification
K	A metric key is attached. (It is not assembled to the main unit.)
KA	Metric dedicated key is attached for both cam holder and driver. (It is not assembled to the main unit.)
N13	Dowel pin holes of cam holder and cam driver are changed to $\phi 13H7$.

Order No :

Catalog No. (W) - (θ)
B - UCMSG 50 - 75

Aerial Cam Unit

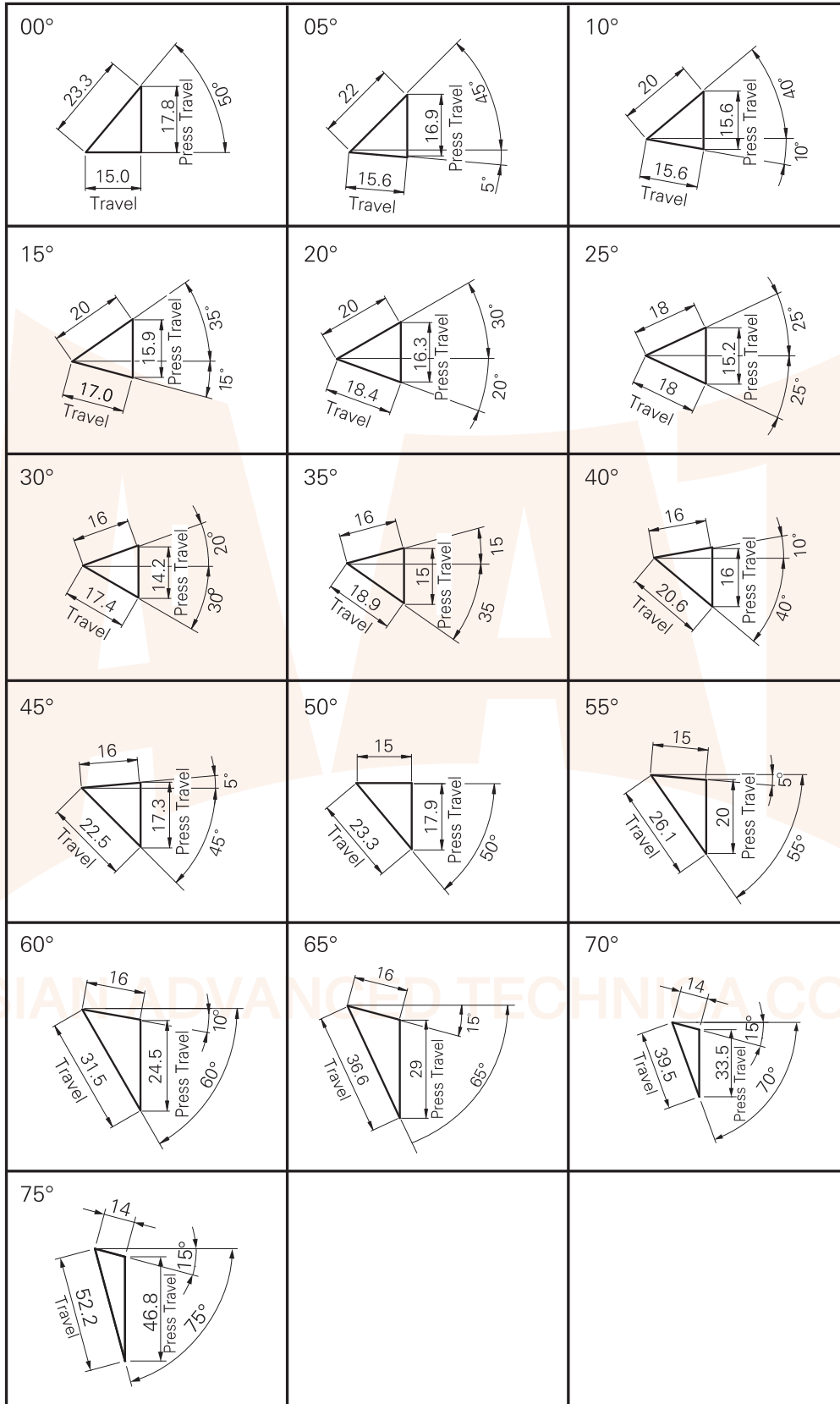
- UCMSG -

Catalog No.	(W)	(θ)	Travel S	Working Force kN(tonf)		Spring Force N (kgf)		Total Weight kg
				Standard Working Force (one million strokes)	Allowable Working Force (300,000 strokes)	Initial Load	Final Load	
B-UCMSG	50	00	15.0	29.4 (3.0)	58.8 (6.0)	184.2 (18.8)	1097.6 (111.7)	10.6
		05	15.6			179.6 (18.3)	1167.4 (118.8)	10.3
		10	15.6			269.4 (27.4)		9.9
		15	17.0					9.7
		20	18.4			359.2 (36.6)	1104.6 (112.6)	9.4
		25	18.0					9.2
		30	17.4			263.0 (26.8)	1104.6 (112.6)	9.1
		35	18.9					
		40	20.6			315.6 (32.2)	1104.6 (112.6)	9.0
		45	22.5					9.5
		50	23.3			263.0 (26.8)	1104.6 (112.6)	9.7
		55	26.1					10.0
		60	31.5			999.4 (101.9)	1104.6 (112.6)	10.1
		65	36.6					
		70	39.5			999.4 (101.9)	1104.6 (112.6)	10.1
		75	52.2					

Aerial Cam Unit

- UCM5G -

Cam Diagram



ASIAN ADVANCED TECHNICA CO., LTD.

Aerial Cam Unit

Aerial Cam Unit

- UCMSG -

Spring Diagram

